

Together we are BNSSG

BNSSG ICB Research Team – Quarterly Newsletter – October 2024

Thank you for visiting the latest edition of the Bristol, North Somerset and South Gloucestershire Integrated Care Board (BNSSG ICB) Research Team's newsletter.

This newsletter has the following sections to keep all our stakeholders up to date with our work:

- News & Upcoming Events - This section lists any upcoming events in our research network.
- New Research Grant Awards - This section details which new projects we are hosting and supporting.
- New ICB Awards for Development - This section highlights development project awards we are funding with our Research Capability Funding (RCF).
- Impact - This section describes our Impact Accelerator Unit (IAU) and highlights an Impact Case Study.
- Researcher Spotlight - This section features one of the many brilliant academics we work with.
- Upcoming Opportunities - Here you can find out about our next responsive call for Research Capability Funding (RCF) and any other opportunities we have.
- The Research Team - This section tells you a little bit more about us, who we are and what we do.
- Contact Us - Here you can find our contact details if you would like to get in touch.

Upcoming Events

Centre for Academic Primary Care (CAPC), University of Bristol, have a number of upcoming events you can find below:

[Events | Centre for Academic Primary Care | University of Bristol](#)

Centre for Health and Clinical Research (CHCR), University of West of England, Bristol (UWE Bristol), events can be found using the link below:

[Events in the Centre for Health and Clinical Research \(CHCR\) - Centre for Health and Clinical Research | UWE Bristol](#)

Population Research UK (PRUK) – Stakeholder consultation workshops

Thursday, November 7th 10am – 3pm. BS1 5DB – We the Curious.

Please find more information [here](#)

This workshop will provide an opportunity to contribute to the PRUK initiative and will be relevant to Longitudinal Population Studies (LPS) stakeholders – including study teams, researchers and – importantly – those looking to bid for PRUK funding support to serve the LPS and the broader research communities.

Bristol Health Partners' Healthy Inclusive Neighbourhood Environments Health Integration Team (SHINE HIT)

Please join the Supporting Healthy Inclusive Neighbourhood Environments Health Integration Team (SHINE HIT) event at EP1, UWE Bristol on 07 November 2024 (10:00-15:30).

Please email hello@bristolhealthpartners.org.uk if interested.

Connecting communities with an essential service: Finding Meals on Wheels Across the UK

Please join this webinar, hosted by the National Association for Care Catering during the National Meals on Wheels Week 2024, to see the map in action and learn about its key features.

Webinar Details:

- Title: *Connecting communities with an essential service: Finding Meals on Wheels Across the UK*
- Speaker: Dr Angeliki Papadaki, Associate Professor in Public Health Nutrition, University of Bristol
- Date/Time: Thursday, 7th November 2024, 15:00-16:00 (UK time)
- Registration: <https://www.thenacc.co.uk/events/meals-on-wheels-webinar-for-nacc-meals-on-wheels-week-2024>

We hope you can join for this informative session and explore how this new resource can benefit you, your organisation and your community.

Game of Stones trial – Our results and what’s next

Thursday 14 November 2024, 13:30-15:00 in person or online
University of Bristol

Join Professors Pat Hoddinott (University of Stirling) and Katrina Turner (University of Bristol) for this free event to learn about the results of the [Game of Stones](#) trial and to discuss how best to implement the findings in local services.

The Game of Stones trial explored whether text messages plus financial incentives could support men who are trying to lose weight.

This event is open to trial participants and to anyone with an interest in obesity services and in moving research into practice. It will be of particular interest to primary care and public health practitioners, healthcare commissioners, charities, researchers and others supporting men to lose weight.

Register: [Ticket Tailor](#)

Sustainability and Transformation of the Health and Care Workforce

join the Centre for Health and Clinical Research (CHRC) at UWE Bristol Glenside Campus, 27th November 2024, 12-2pm, to hear about their latest programme of work regarding the current and future health and care workforce.

Register [here](#).

Healthcare in the digital age: A new era of inequality?

The Elizabeth Blackwell Institute for Health Research are delighted to welcome Professor Trish Greenhalgh, Professor of Primary Care Health Sciences, University of Oxford, to give the eleventh annual Elizabeth Blackwell lecture, Bristol on 3 February 2025.

Please find more information [here](#)

The UK Society for Behavioural Medicine (UKSBM) 20th Annual Scientific Meeting

25-26 March 2025 at Mercure Grand Bristol Hotel

Led by Dr Sarah Denford and a number of researchers at the University of Bristol. The theme for this Conference is Behavioural Medicine for an Equitable Future.

For more information, please click [here](#)

News

AFRI-c: Recruitment successes with care homes

We asked Dr Garziella Mazza, Trial Manager for AFRI-c, to comment on the success of recruiting care homes to participate in the AFRI-c project. AFRI-c was a cluster RCT designed during the COVID-19 pandemic, which allowed for remote delivery. The study aimed to determine whether high-efficiency-particulate-air (HEPA) filtration units can reduce symptomatic respiratory infections including COVID-19 in care homes. Over three consecutive winters, 91 care homes in England were randomised to either receive air filtration units for bedrooms and communal areas (intervention) or to continue with normal infection control measures (control).

To read more click [here](#).

Call for research to accelerate action on preventing poor health outcomes

The National Institute for Health and Care Research (NIHR) has recently announced a new themed funding focusing on early action to prevent poor health outcomes with the aim to drive a 'health and social care revolution'.

Funding will be available via existing NIHR research programmes including Programme Grants for Applied Research, Public Health Research and others.

The funding aims to support innovative research that will:

- Drive improvements in population health
- Reduce pressure on health and social care systems
- Drive economic growth through a healthy working age population

For more information please visit:

[Call for research to accelerate action on preventing poor health outcomes | NIHR](#)

A message from Paul Roy - *Associate Director for Research*:

We are really pleased to see this recognition and support from NIHR. We have long been advocating that the future of health and care delivery is in the community, and that to help us achieve this, health and care research needs to be focused on community based health and care services. This themed call from NIHR is a strong indicator that investment will be increasing for community based health and care research.

New Research Grant Awards

As the Research Team at the BNSSG ICB we host a portfolio of research grants and support them through their application and dissemination. Below are our most recent grants that we host with links to their plain English summaries on our website:

- [Transforming assessment and diagnosis of dementia in Bristol for people from Chinese, Caribbean and South Asian and communities.](#)
- [Evaluating the Public Health Impact of Interventions for the Prevention of Drug-related Deaths in the Population: in Scotland \[EPHESUS\]](#)
- [CLEAR: Increasing awareness, training in and use of the left lateral cervical screening position in primary care: Increasing choice and supporting implementation of clinical guidelines.](#)
- [PROACTIVE: HePatitis C Reinfection: Optimising surveillAnCe for detection and preVEntion](#)

ICB Awards for Development Projects

We support a number of awards through our Research Capability Funding (RCF), with quarterly responsive calls, Launching Fellowships, Researchers in Residence and Academic Awards opportunities.

Research Capability Funding

You can find our application form and guidance on our website [here](#).

The deadline for our next Research Capability Funding call will be 20th of January 2025.

Type 1 Projects

These are very early stage projects, exploring a particular health condition or the needs of a particular patient group to find out what research is most needed. Mainly these projects involve talking to the people who plan, deliver and receive health and care services.

Type 2 Projects

These are projects with the aim of writing and developing a NIHR grant application. This can include pump priming work required to write a high quality NIHR application (e.g. preliminary data collection, literature review).

Please find more information [here](#).

Launching Fellowships

This scheme supports early career, post-PhD researchers to establish their academic career, enhance their publication record and develop their first research grant application (e.g. an NIHR Fellowship or Research for Patient Benefit (RfPB) call). We currently have two Launching fellowships underway, and we are delighted to have recently awarded a new Fellow, [Dr Julie Armoogum](#), who started in March 2024.

Researchers in Residence

Researchers in Residence involves co-locating researchers within non-academic organisations. This enables non-academic organisations to make research a part of their ongoing processes, and researchers to become more involved in contributing to public health decision-making.

[Dr Jane Meyrick](#) is an Associate Professor of Health Psychology at the University of the West of England UWE Bristol); they are currently a Researcher in Residence at [the Bridge Sexual Assault and Rape Centre](#) (SARC). The Bridge offer medical care, emotional and psychological support, and practical help to anyone who has been sexually assaulted. Read more about Dr Meyrick's Researcher in Residence work [here](#).

Chandini Sree Venkataramani is a Counselling Psychology doctorate student at UWE Bristol. Chandini worked with the [Self-Injury Support Organisation](#) to gain a deeper understanding on how peer-led services are transforming the mental health landscape by fostering connections rooted in shared experiences and empathy. Read Chandini's blog about their work and experience as a Researcher in Residence [here](#).

Dr Lorna Duncan is a Research Fellow at Bristol Medical School (PHS), University of Bristol, and worked with Dr Emily Phillips, a GP Registrar and National Population Health Fellow 23/24 at BNSSG ICB and Bristol City Council. They analysed qualitative data collected by Dr Phillips during eleven semi-structured patient interviews between March and April 2024. The patients were selected from a GP practice in North Bristol in the Segment 5 population (the most multi-morbid and highest healthcare cost group representing 3% of people in BNSSG) and purposively sampled for their high numbers of cardiovascular co-morbidities. Each were asked for their perspectives on all aspects of the healthcare they had received with the aim of improving cardiovascular outcomes. The project recommendations were presented at the GP practice where patients were selected from, North Somerset Delivery Group, the Population Health Improvement Team, which is a multidisciplinary team involving public health specialists and clinical leads.

If you would like to hear any more about the projects, or how you can access our Researchers in Residence work, please email us at bnssg.research@nhs.net.

Academic Career Award (Senior Researcher)

This award is for academics from the University of Bristol and the University of the West of England.

This award supports Senior Research Fellows and/or Senior Lecturers who are not core funded by their University employer. This award will enable academics to dedicate time to activities that support their career stability e.g. applying for research grants or Advanced Fellowships.

These Awards are intended to help reduce the pressures of short-term contracts by awarding funding equal to 50%WTE of the recipients' salaries over an 18 month duration.

Please speak to your line manager about this award if you are interested.

More information about our awards can be found on our website [here](#)

ICB Evidence Fellow Award

This award is for ICB employees with ambitions to develop their career to include an academic element. Clinical-academic roles are common amongst health service delivery teams, and they bring benefits to their service, enrich the careers of the post-holders and enhance the quality of research.

We want the same opportunity and benefits within health and care planning.

Activities undertaken via this award should support a future application for academic career fellowships and be able to bring benefits to the recipient's current work.

Congratulations to Karon Arnold, a member of BNSSG ICB's Medicines Optimisation Team, for her successful application to the ICB Evidence Fellow Award Scheme. Her work will assess the longer-term impact of childbirth on medication adherence and assess whether certain drug groups are affected more than others. Specifically, Karon will look at patient demographics to assess whether socioeconomic status affects medicine adherence, as well as the impact on subsequent pregnancies.

Impact

In partnership with UWE Bristol and University of Bristol, BNSSG ICB has developed [The Impact Accelerator Unit \(IAU\) - NHS BNSSG ICB](#). The IAU is a dedicated resource to speed up the embedding of evidence into our health and care system to increase the value of the services provided in BNSSG.

What the IAU will do, and how, will be different for every piece of evidence. Embedding evidence may require updates to clinical guidelines, ICB policy, clinical systems, referral pathways, training programmes, and/or contracts.

The IAU team will bring together all relevant stakeholders to plan the required activities and use the IAU resources to deliver the changes required for lasting and sustainable improvements.

As part of our goal to promote Knowledge Mobilisation we will be highlighting an Impact Case Study that the Research Team has supported in future editions of our newsletters, as well as opportunities for staff across our Integrated Care System to apply for funding to ringfence their time to become Knowledge Mobilisation Fellows.

The Knowledge Mobilisation Fellows will be funded so they can dedicate time to embedding research evidence into practice, to help improve services and outcomes in BNSSG. The Knowledge Mobilisation Fellows will be supported by the Impact Accelerator Unit, and the Applied Research Collaboration West of England (ARC West). Watch this space in early 2025 for more information.

Department Spotlight

We interviewed Dr Kerstin Nothnagel, from the Bristol Medical School of the University of Bristol, who is currently on an internship at the House of Lords.

1. How did you get into this role and work?

After years in A&E and humanitarian work, I wanted to make a bigger, lasting impact—something that would benefit patients now and for generations. That’s how I found myself in research. As a second-year PhD student at Bristol, I’m diving into AI in healthcare. My House of Lords internship has been a real eye-opener, especially watching AI policy unfold during a government shift. It feels like I’m right where the action is!

2. What difference do you hope your research will make to the people in Bristol, North Somerset, and South Gloucestershire?

BNSSG is a great healthcare hub, but not everyone has equal access—especially the elderly and minority groups. My work with GP Care Bristol aims to change that. By using AI-guided ultrasound in primary care, we could bring diagnostics to those who struggle to get the care they need, making healthcare more accessible for all.

3. If you could change one thing in your world, what would it be?

Equal education. It’s the key to better healthcare, global collaboration, and making sure technology like AI benefits everyone—not just a lucky few.

4. Who is your biggest influence?

My wife, Anna. She’s my biggest cheerleader, challenger, and the one who keeps me grounded.

5. What are you most proud of and why?

Switching from clinical work to research. It’s given me the chance to ask the big questions and really contribute to improving patient care.

6. What are the biggest issues in your research area?

Making sure AI in healthcare is safe, effective, and affordable. And the big one—creating global regulations that ensure everyone can benefit from it.

7. What have been/are the biggest challenges in your research and how did you/are you planning to overcome them?

The more I learn, the more I realise how much I don’t know. But that’s what keeps me going—there’s always more to discover!

8. What book are you currently reading?

The 48 Laws of Power—a recommendation from a friend after I shared my struggles navigating interest of politicians versus evidence-based research at Parliament!

Upcoming Opportunities

Academic Career Award (Senior Researcher)

The next deadline for the Academic Career Award on the 13th of November 2024. Our application form and guidance can be found on our [website](#).

The Research Team

Since 2013, we have been the [highest ranking ICB](#) in England for [Research Capability Funding](#). Each year, we support more than 60 individuals to develop new research grant funding applications, including academics, commissioners, GPs, local authority, and other care staff.

Most of the research we support is designed with service commissioners, and this helps us ensure that all of the research we support directly aligns with ICB or national priorities.

In total, we host and support around 40 research grants funded by the National Institute for Health and Care Research (NIHR), with a total value of more than £35 million.

What we do:

The Research team is used most often for the following areas of support:

- Research Capability Funding
- Contract hosting
- Research governance support
- Grant application review and support
- General research advice

We also offer support in the following areas:

- Networking and facilitation of connections (e.g. NHS, academic, Local Authority, community health)
- NHS finances and costings
- Study recruitment logistics
- Data access requests
- Software (e.g. GP software and Commissioning Support Unit)
- Intellectual Property management
- Contract enforcement
- Implementation and impact

Meet the Team

Meet the members of our team below. We've highlighted some of the areas we each focus on, though we can help with any of the areas listed above. Please contact

bnssg.research@nhs.net for support.



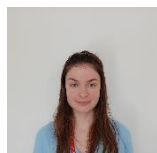
Paul Roy – Associate Director for Research

Paul heads up the team, and his main area is oversight of the portfolio and strategy for growing research activity and increasing evidence use across the Integrated Care System.



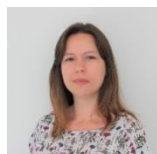
Kat Bagi- Research Portfolio Manager

Kat is our Research Portfolio Manager. Her area of focus is research finance and information governance.



Rebecca Howling- Research Portfolio Officer

Becky is our Research Portfolio Officer. She can help with costing your grant applications with the University of Bristol, the completion and authorisation of SoECATs as an AcoRD Specialist, and our Researchers in Residence funding.



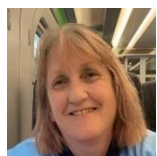
Alison Diaper- Senior Research Fellow

Alison works in a dual role between BNSSG ICB and the University of the West of England (UWE Bristol). She can help with research design and grant applications with UWE Bristol, including costings and SoECATs.



Rachel Avery- Research Governance Officer

Rachel is our Research Governance Officer. She can help with setting up a study for recruitment.



Joolz Clements- Research Finance Support

Joolz is Research Finance Support. She can help with invoices and PPI payments.



Ros Hussey- Research Governance Support

Ros is Research Governance Support. She can help with Letters of Access and the review of studies opening in BNSSG.



Matt Freeman- Research Portfolio Support

Matt is Research Portfolio Support. He can help with financial reporting and working to reduce health inequalities through the BNSSG Diverse Research Engagement Network (REN).

Contact Us

Follow us on X (formerly Twitter):

[NHS BNSSG ICB Clinical Effectiveness & Research \(@BNSSGResearch\)](#)

Tel: [0117 900 2268](tel:01179002268)

Email: bnssg.research@nhs.net

If you would like to be removed from our mailing list or have any queries about the newsletter, please email: bnssg.research@nhs.net