

Reference: FOI.ICB-2324/324

Subject: ICB Organisational Structure; Finance, HR, procurement, and estates.

*I can confirm that the ICB **does hold the information requested**; please see responses below:*

| QUESTION | RESPONSE |
|---|--|
| Please can you send me the ICB organisational structure with all names and job titles in Finance, hr, procurement, and estates. | Please find enclosed. The ICB does not routinely share names of staff on organisational structures to ensure that the structures remain accurate, however the declarations of interest register for all staff is updated monthly and contains staff names and job titles. The register can be found on the ICB website: https://bnssg.icb.nhs.uk/wp-content/uploads/2023/11/ICB-Declarations-of-Interest-Register-v13-For-publishing-14.11.23.pdf |

The information provided in this response is accurate as of 27 November 2023 and has been approved for release by Jo Hicks, Chief People Officer for NHS Bristol, North Somerset and South Gloucestershire ICB.

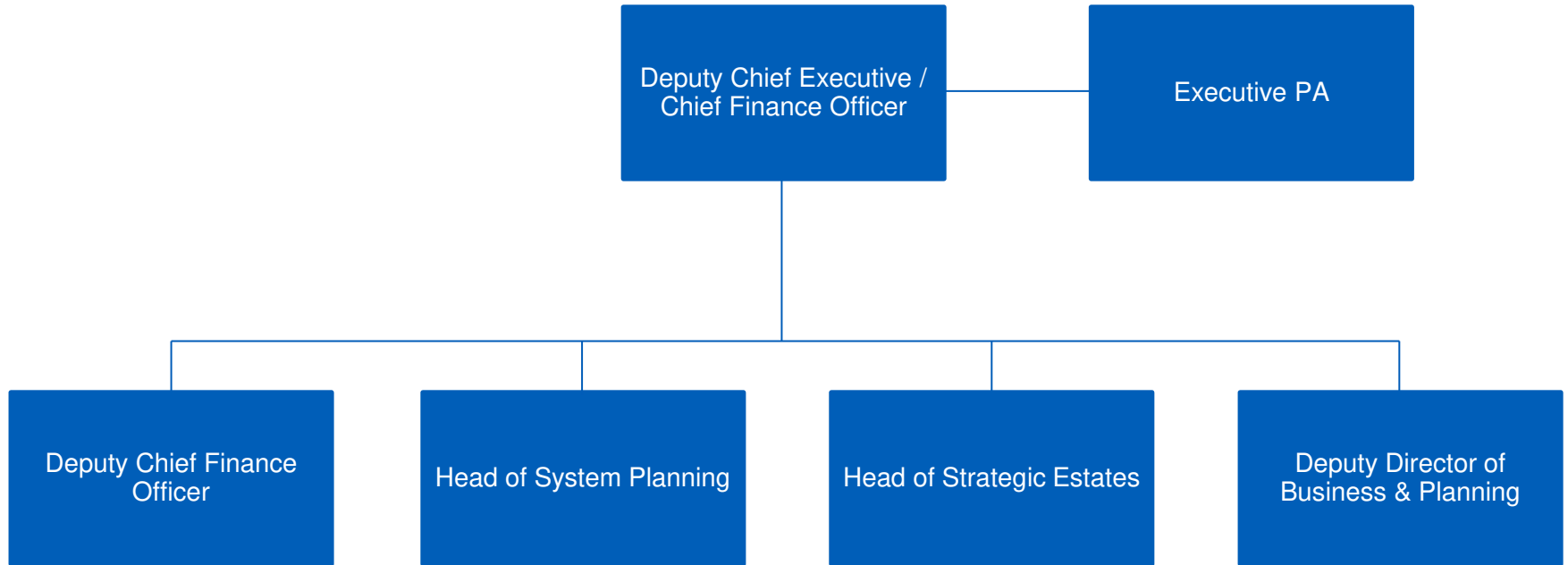
Business & Planning Directorate

Executive Director – Sarah Truelove

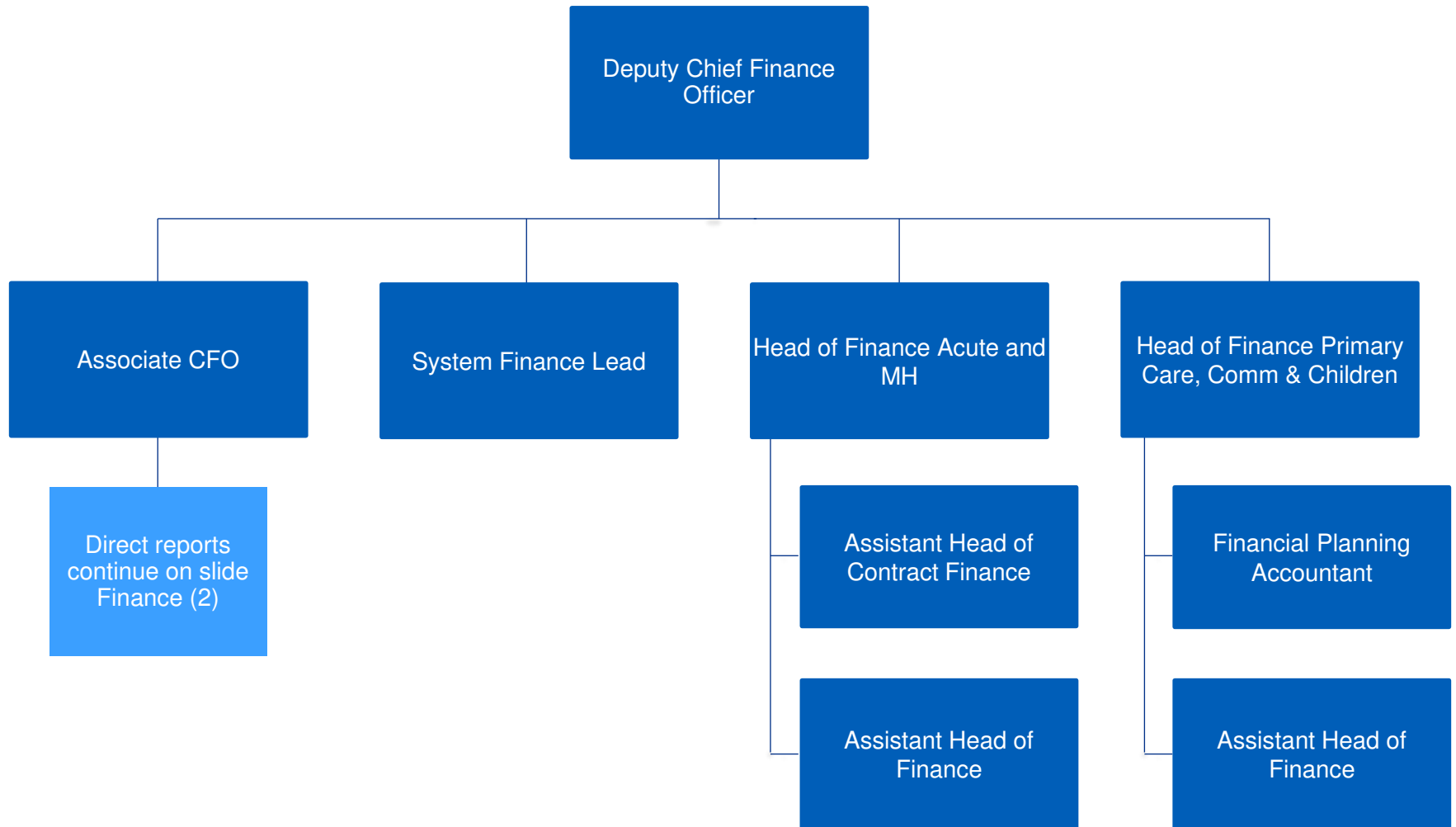
Updated: November 2023

Master document held by People Directorate

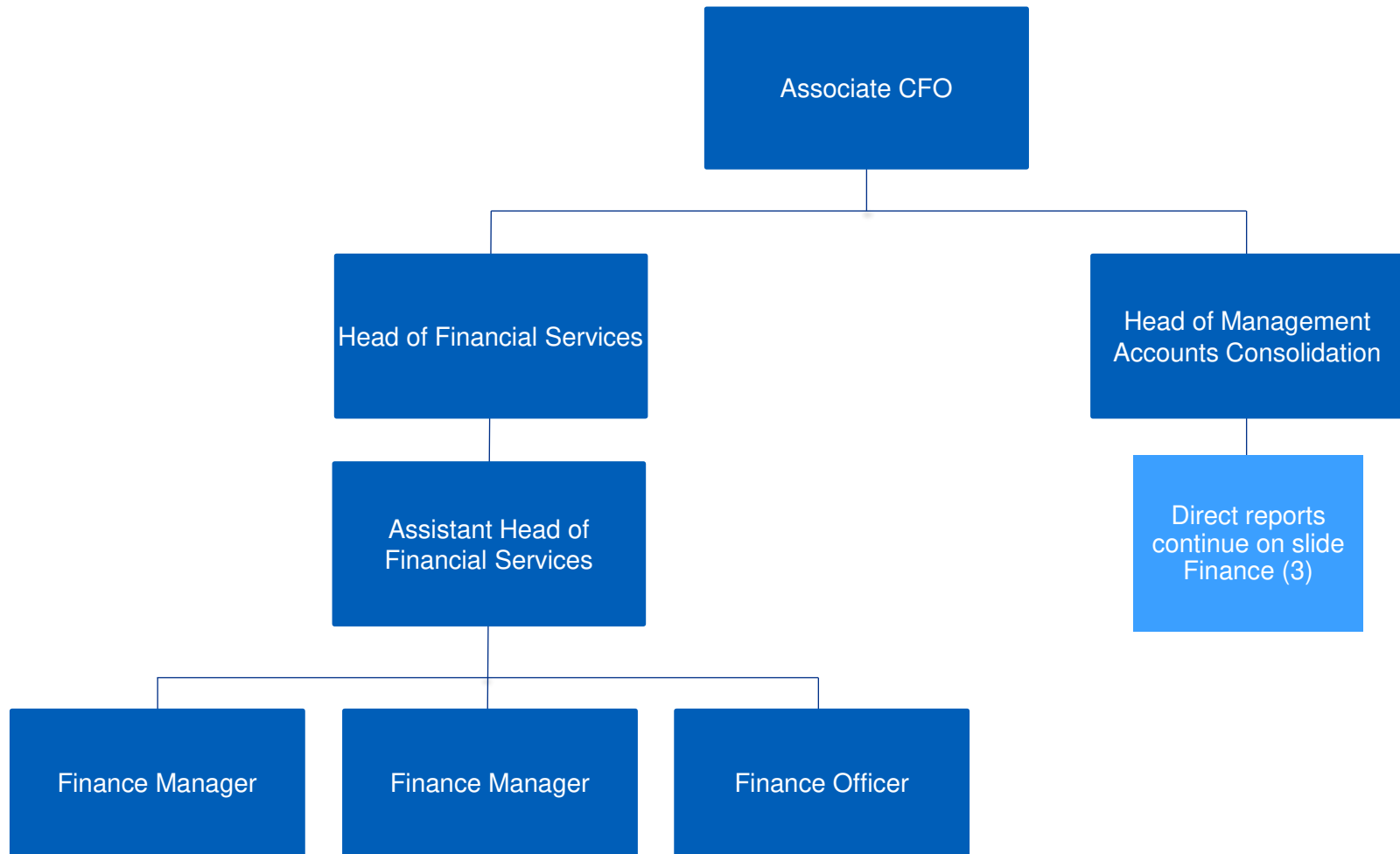
Business and Planning (Direct reports)



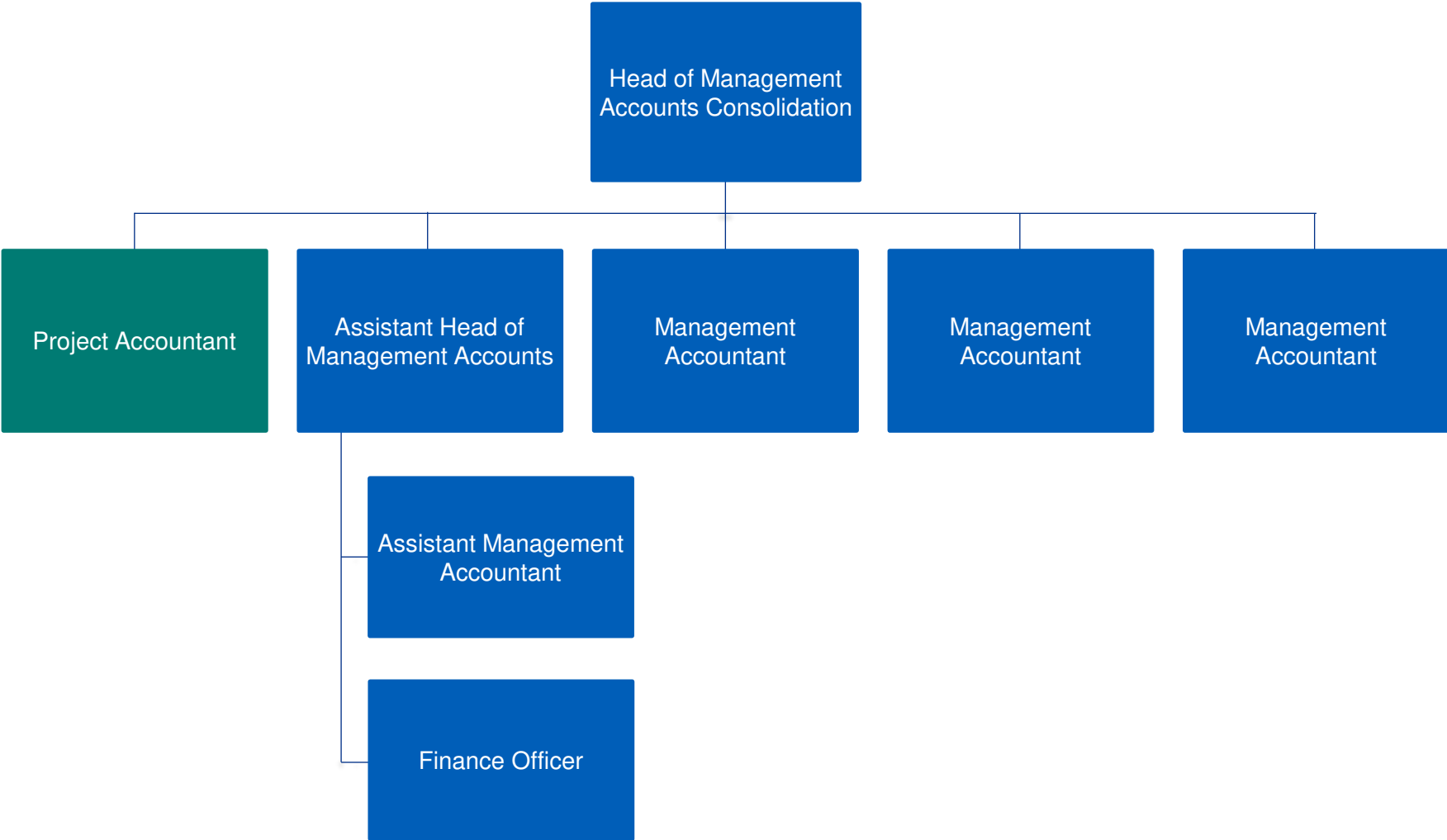
Finance (1)



Finance (2)



Finance (3)



Contracts (1)

Deputy Director of Business & Planning

Head of Contracts & Procurement
(Children's & Community)

Head of Contracts & Procurement
(Acute & MHL D)

Senior Contract Manager

Senior Contract Manager

Contract Manager

Contract Manager

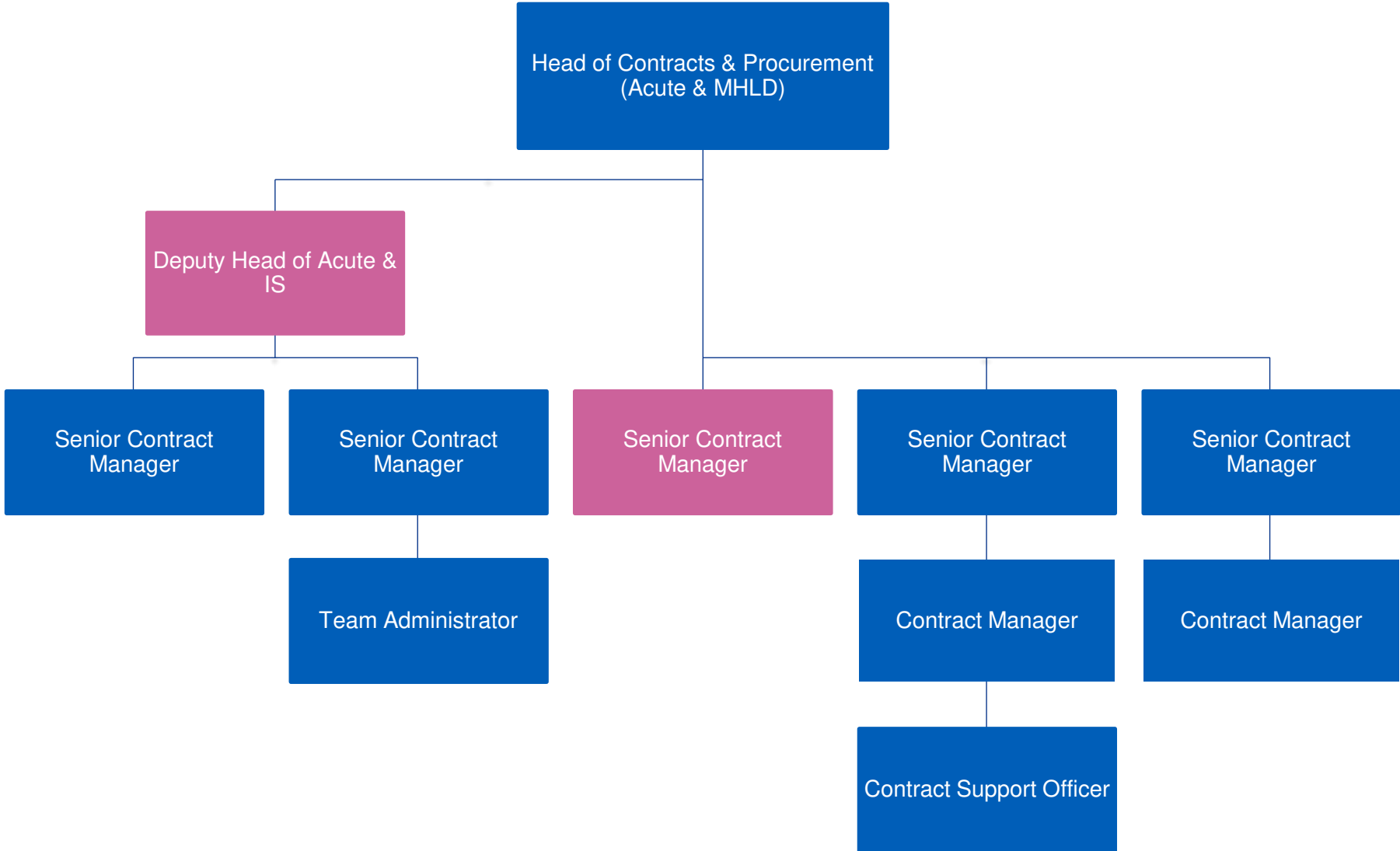
Assistant Contract Manager

Contract Support Officer

Team Administrator

Direct reports
continue on slide
Contracts (2)

Contracts (2)



Planning



Estates



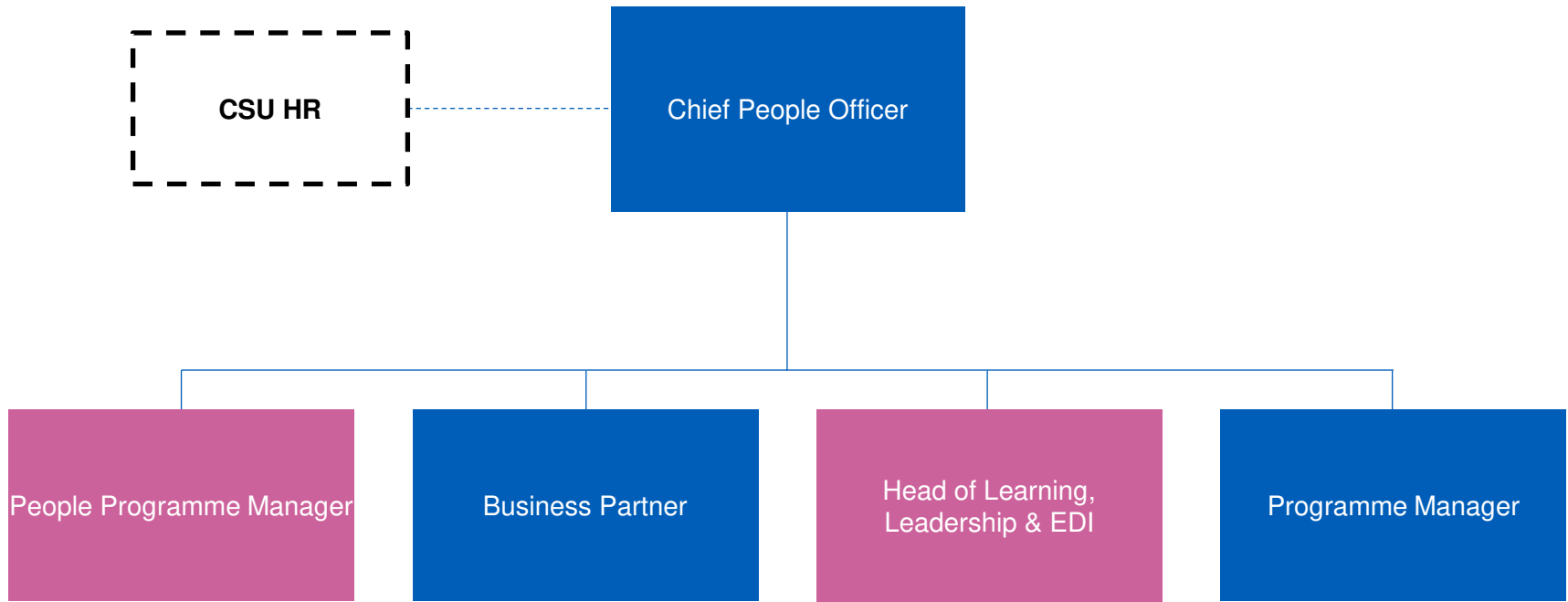
People Directorate

Executive Director – Jo Hicks

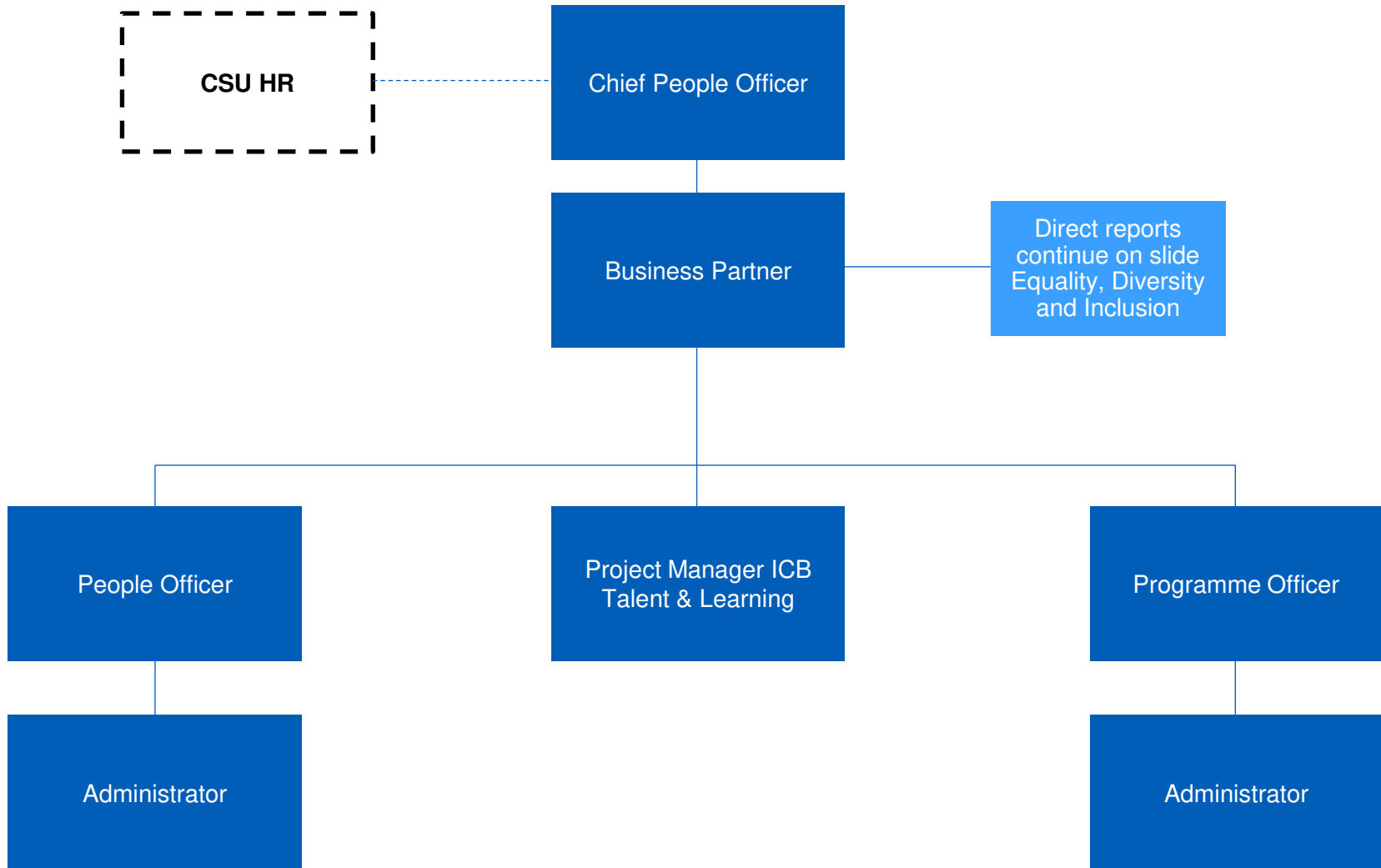
Updated: November 2023

Master document held by People Directorate

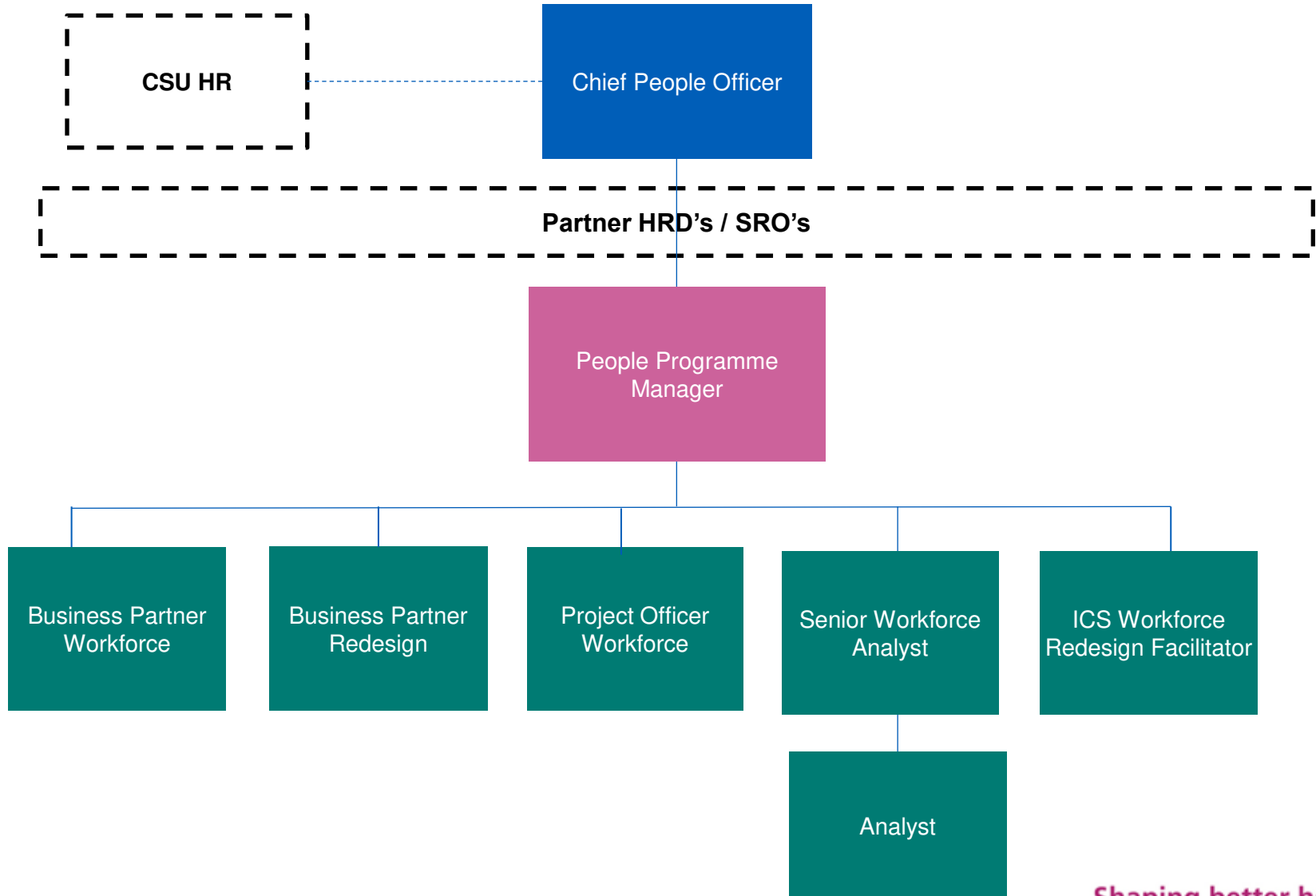
People Directorate (Direct reports)



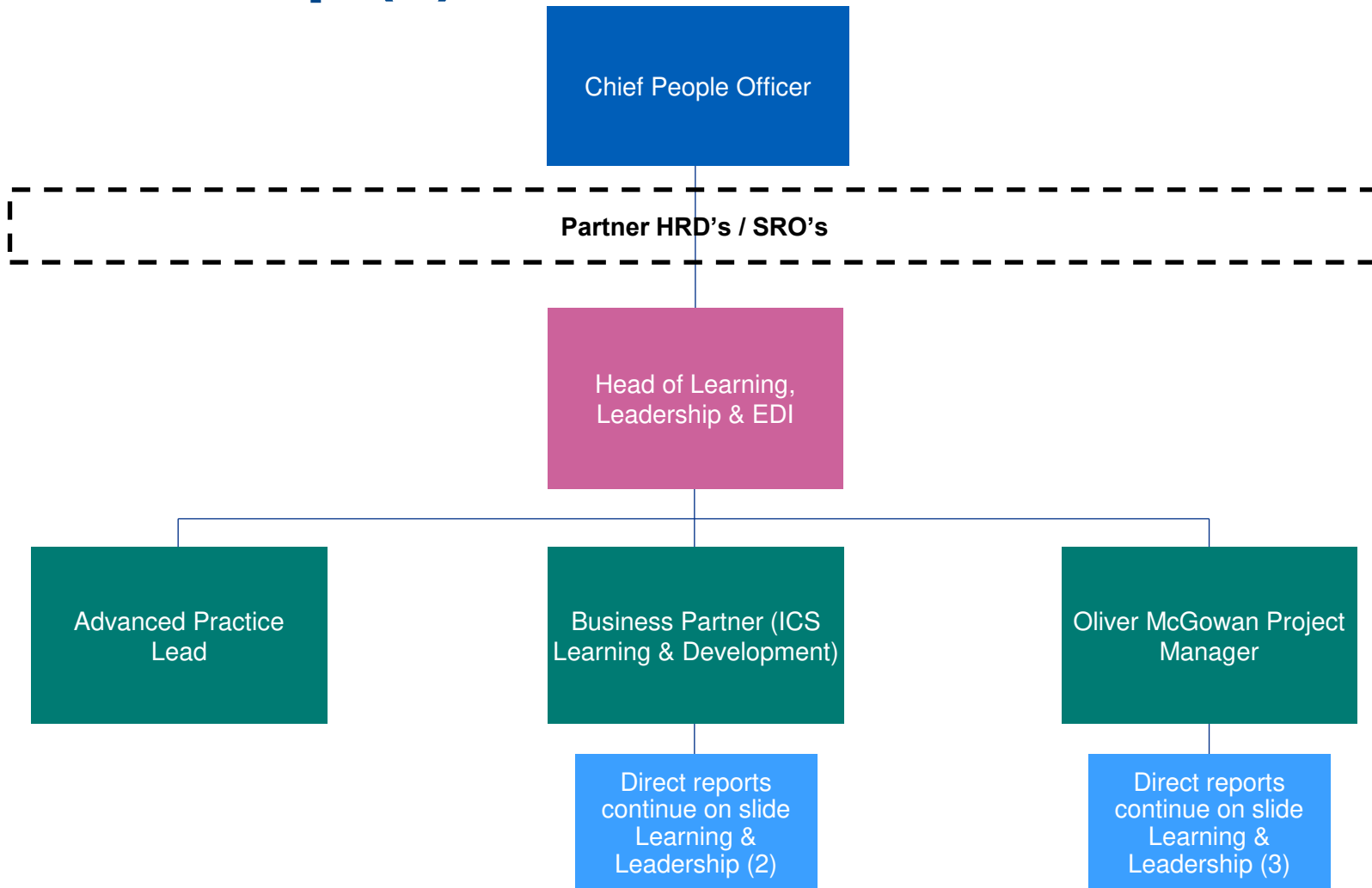
Chief People Office



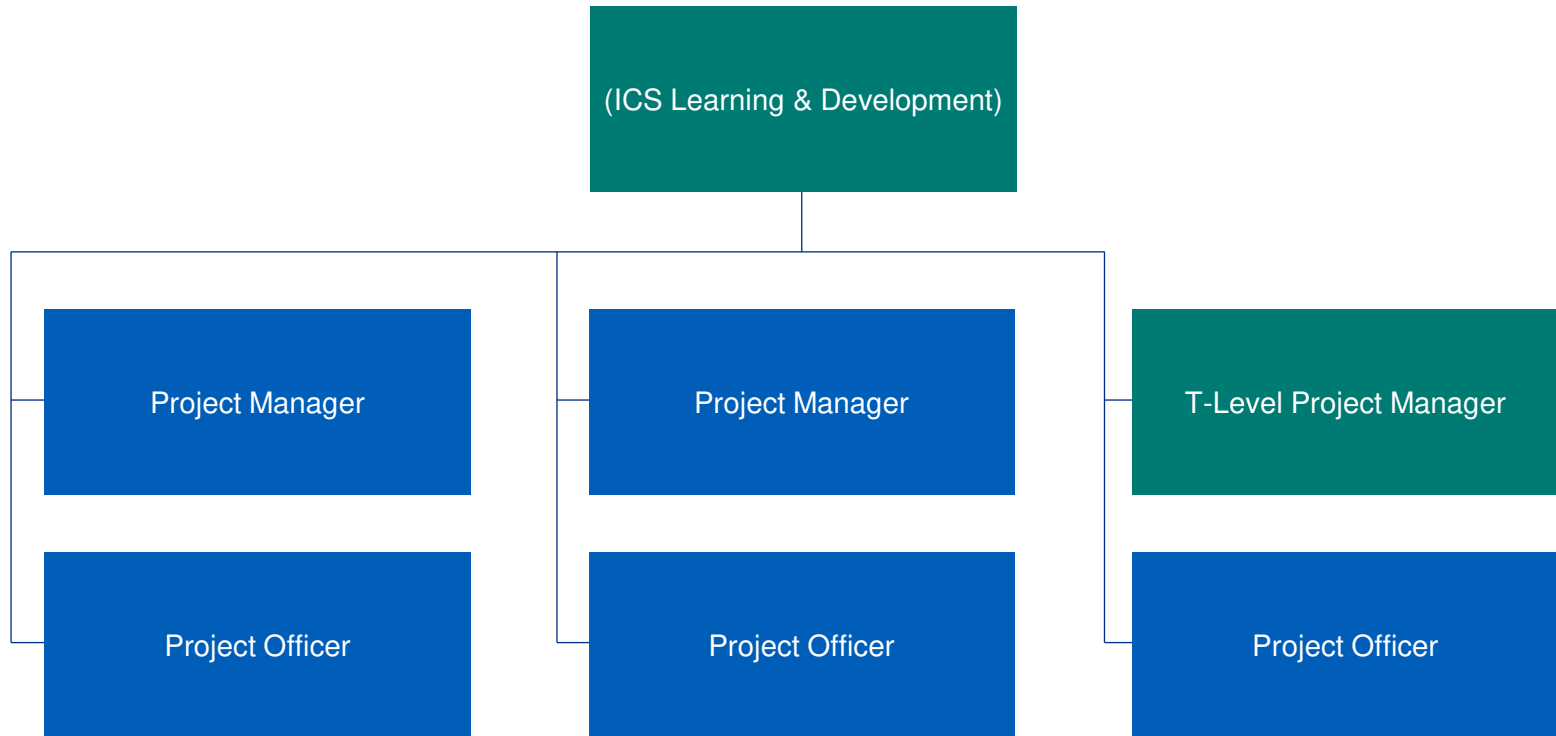
People Programme Team: Supply and Demand



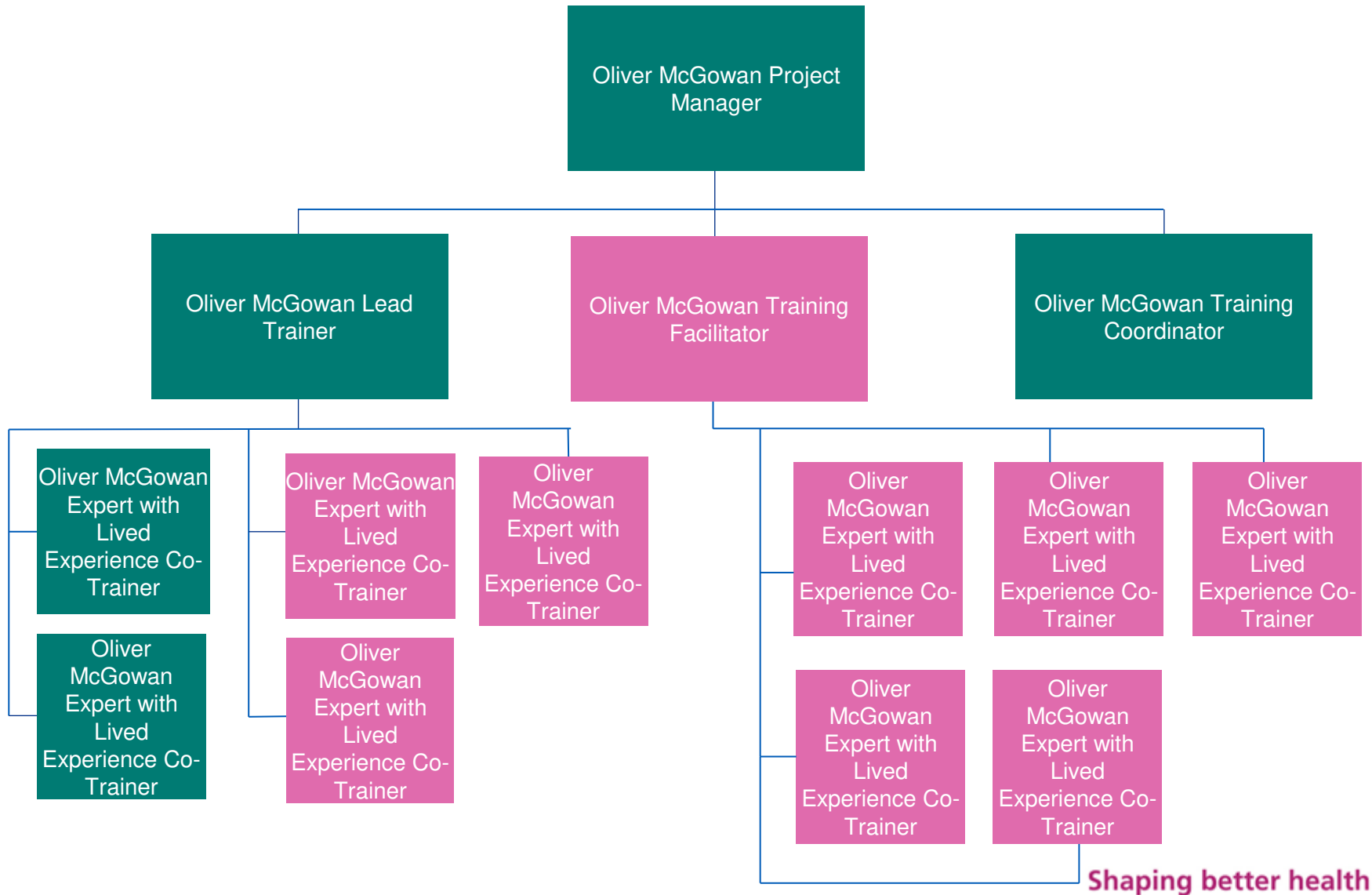
People Programme Team: Learning and Leadership (1)



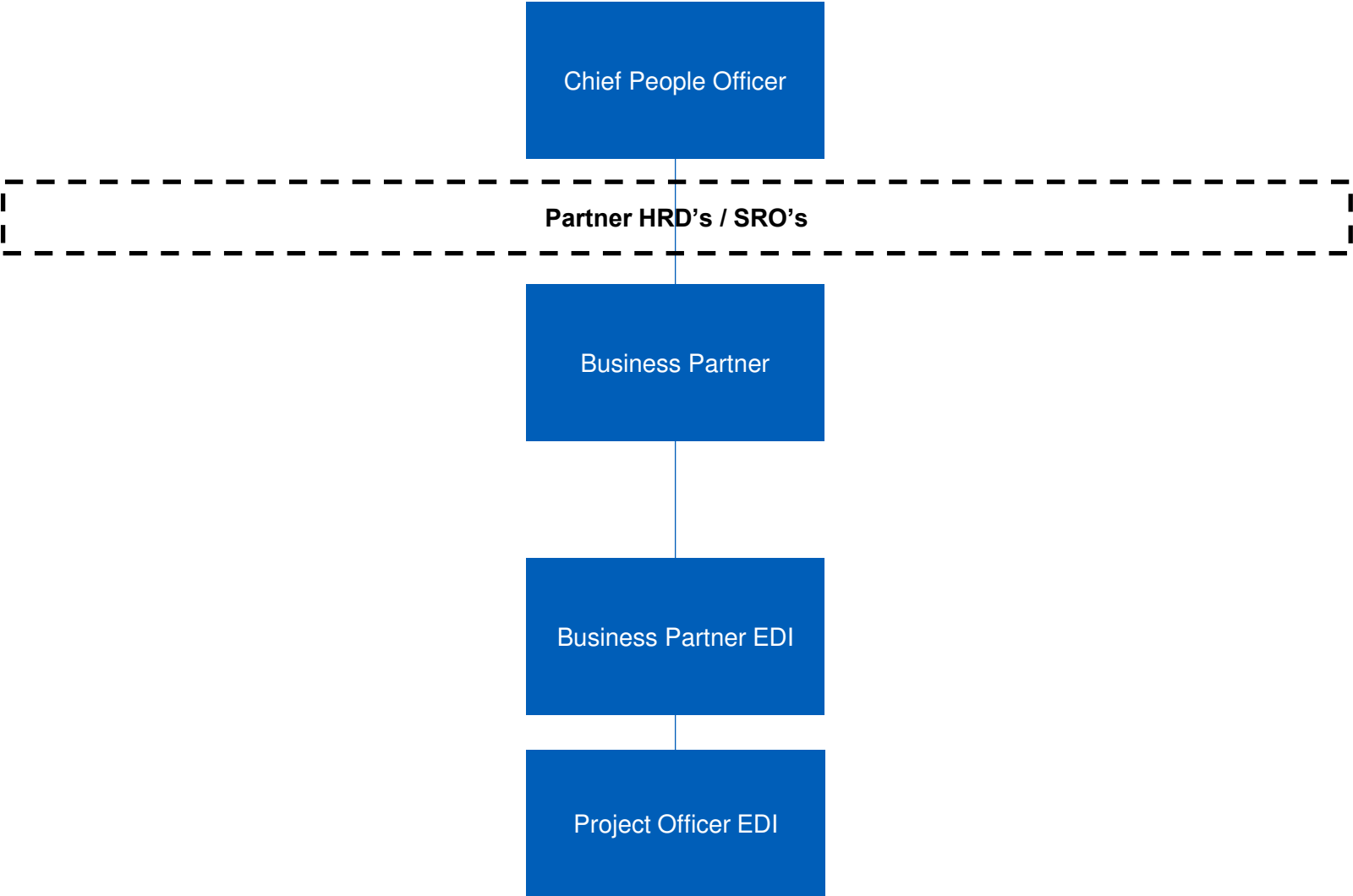
People Programme Team: Learning and Leadership (2)



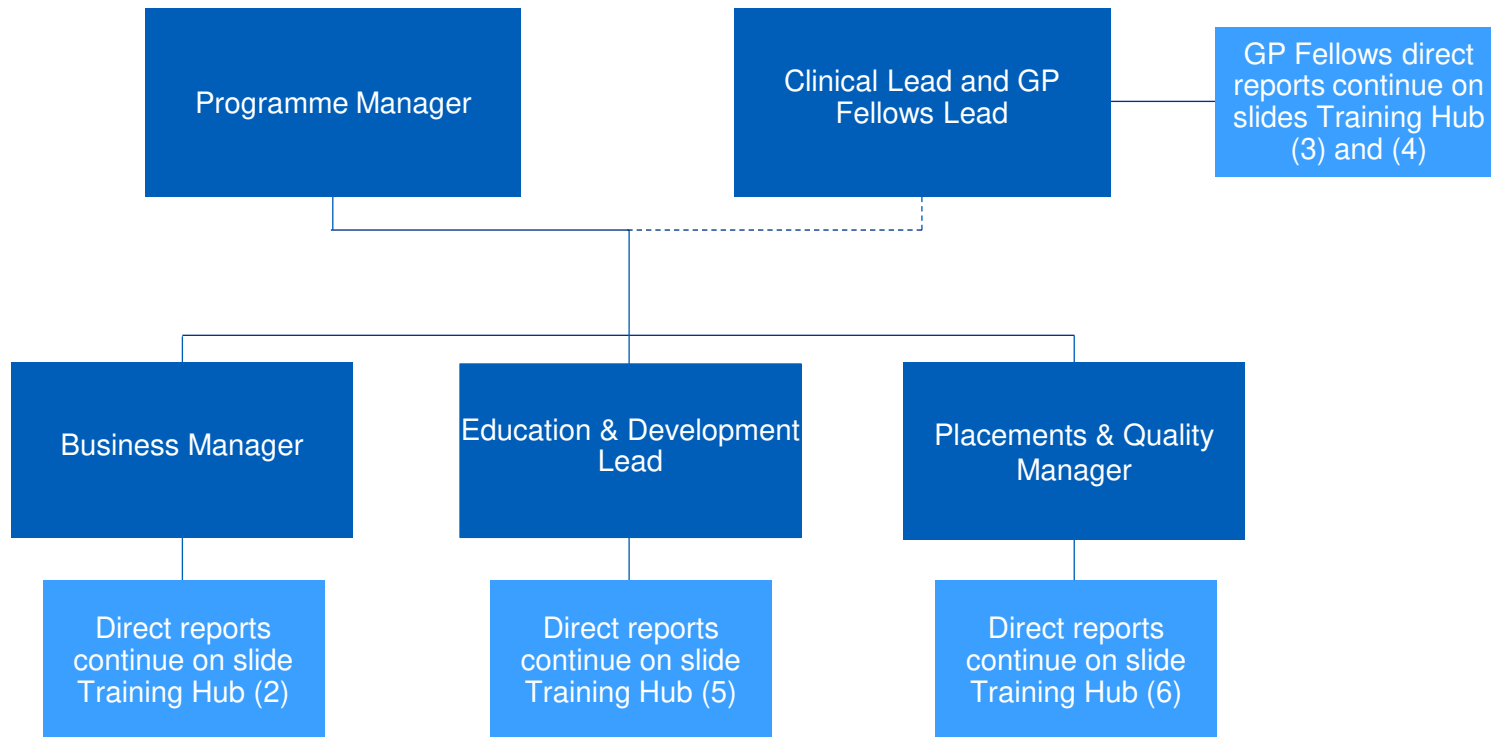
People Programme Team: Learning and Leadership (3)



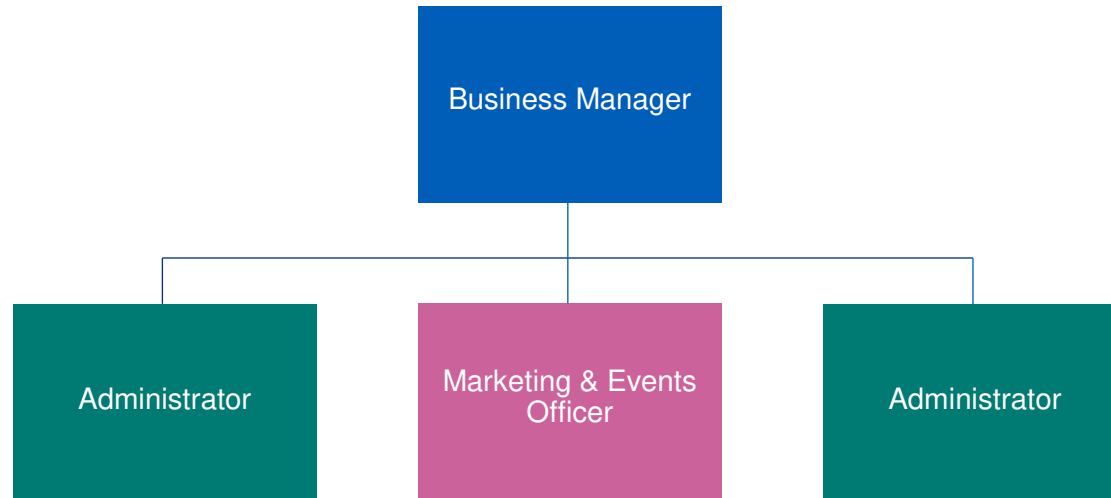
People Programme Team: Equality, Diversity and Inclusion



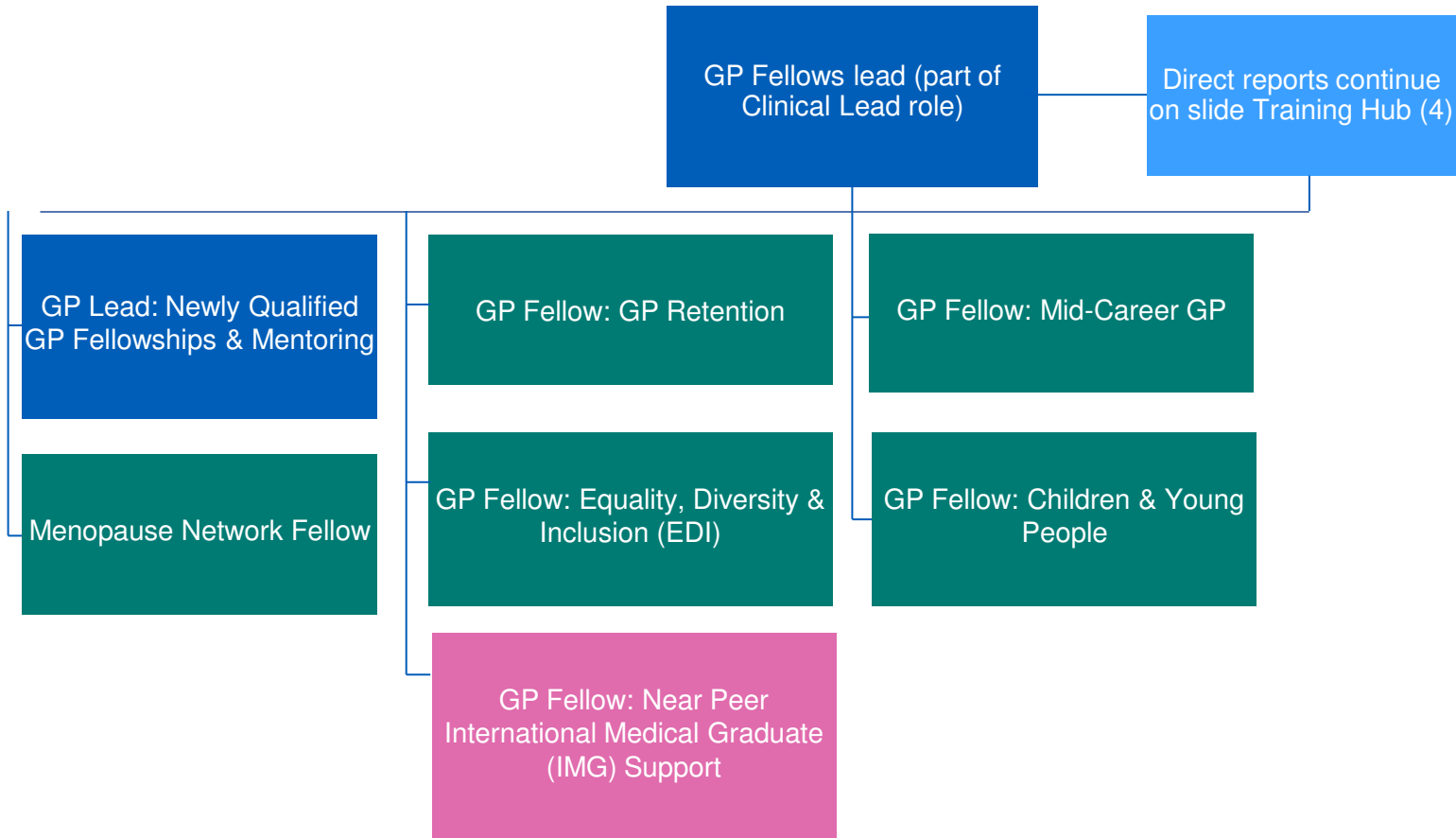
Training Hub (1)



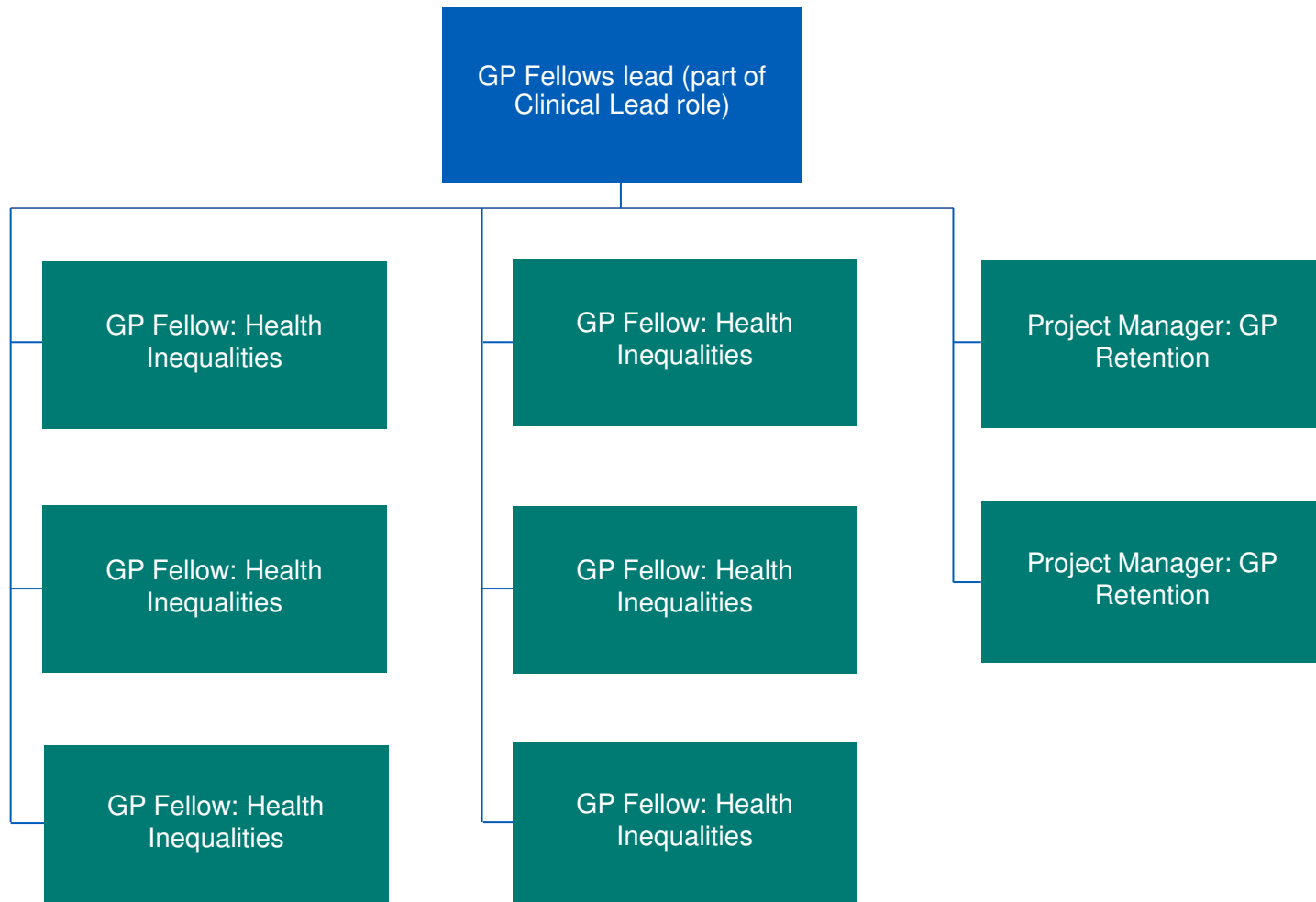
Training Hub (2)



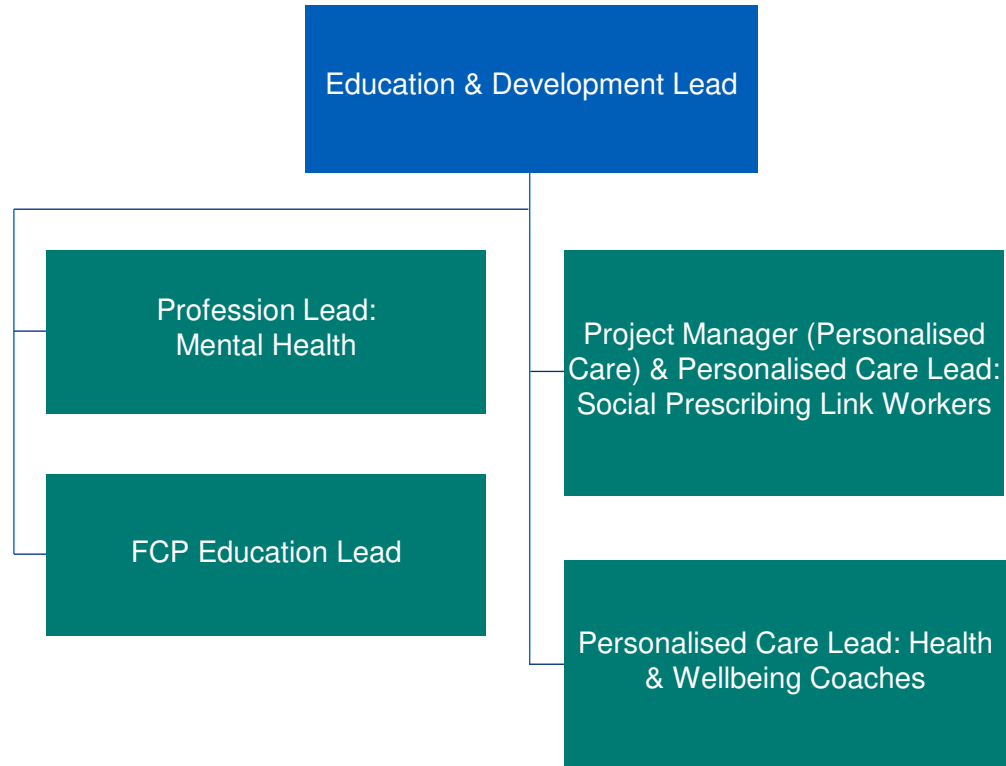
Training Hub (3)



Training Hub (4)



Training Hub (5)



Training Hub (6)

