

Reference: FOI.ICB-2324/050

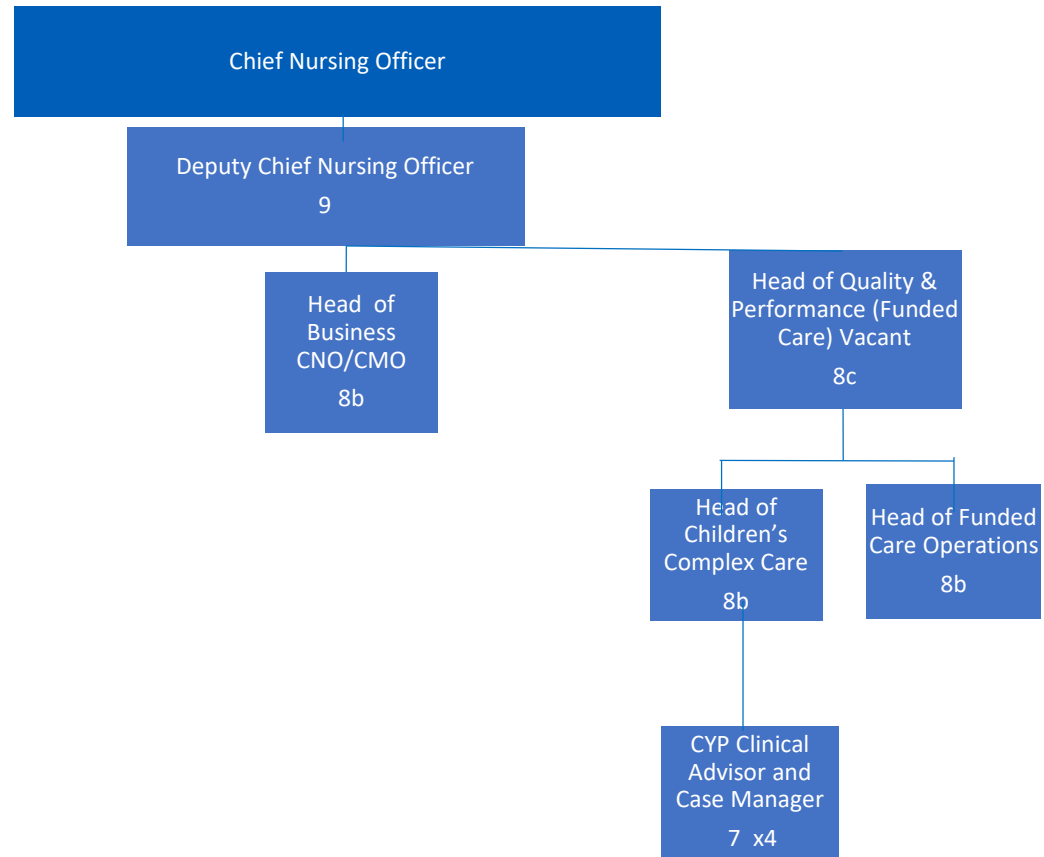
Subject: CHC Team organisation chart

*I can confirm that the ICB **does hold the information requested**; please see responses below:*

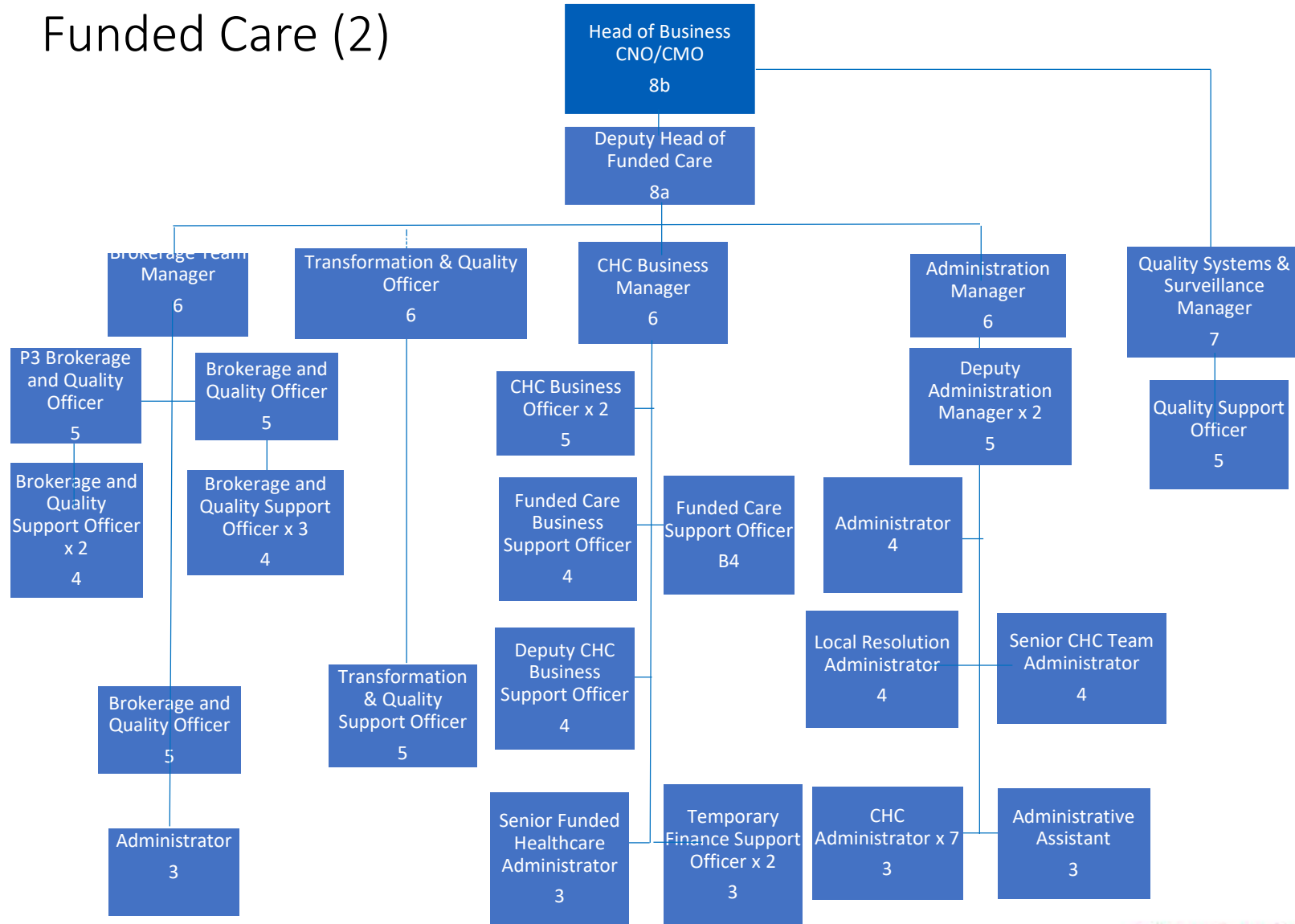
| QUESTION | RESPONSE |
|--|-------------------------------|
| Please can you send me the organisation chart for BNSSG continuing Healthcare team. Clarification received 10/05/23: operational clinical CHC staff for both adults and children's teams | Please see enclosed document. |

The information provided in this response is accurate as of 11 May 2023 and has been approved for release by Rosi Shepherd, Chief Nursing Officer for NHS Bristol, North Somerset and South Gloucestershire ICB.

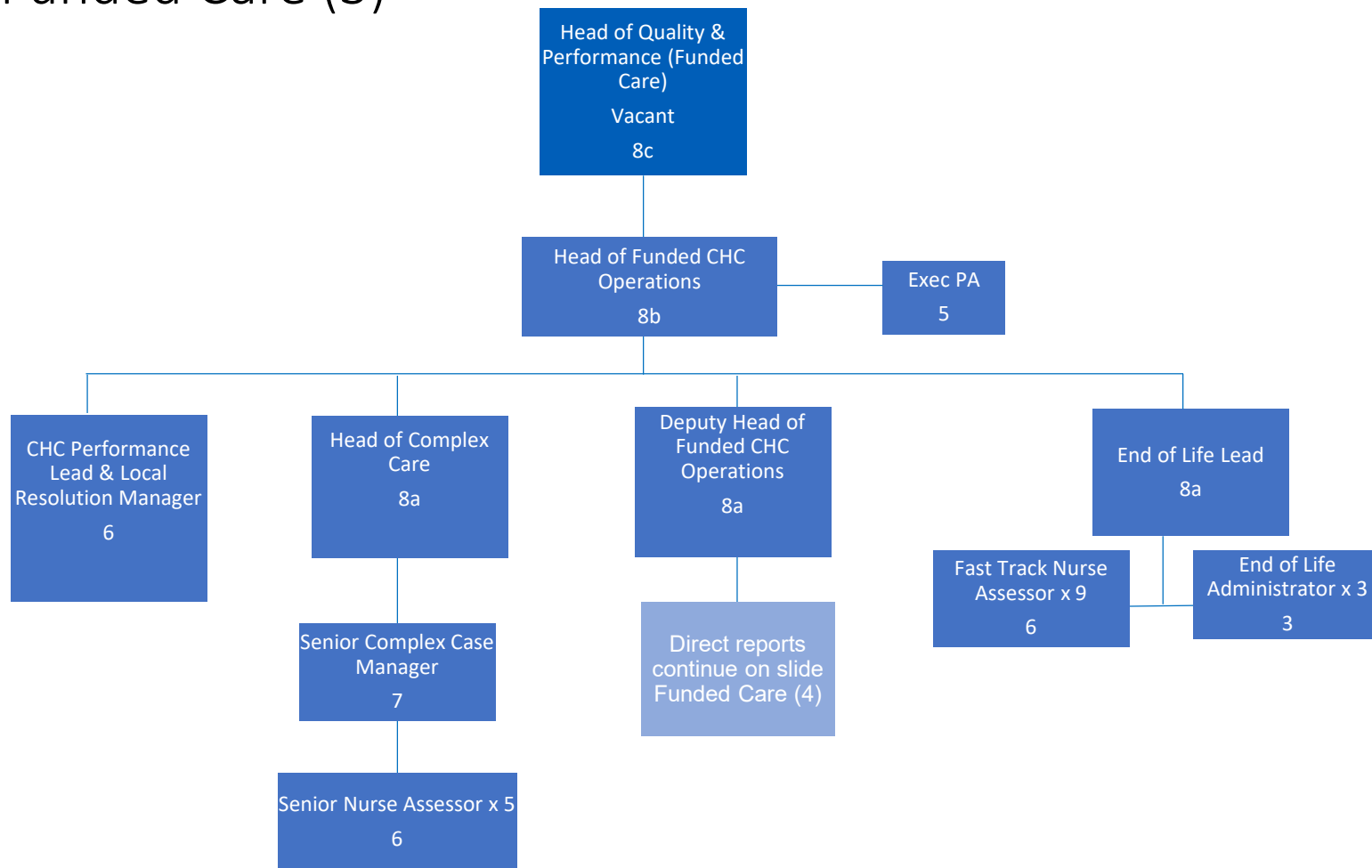
Funded Care



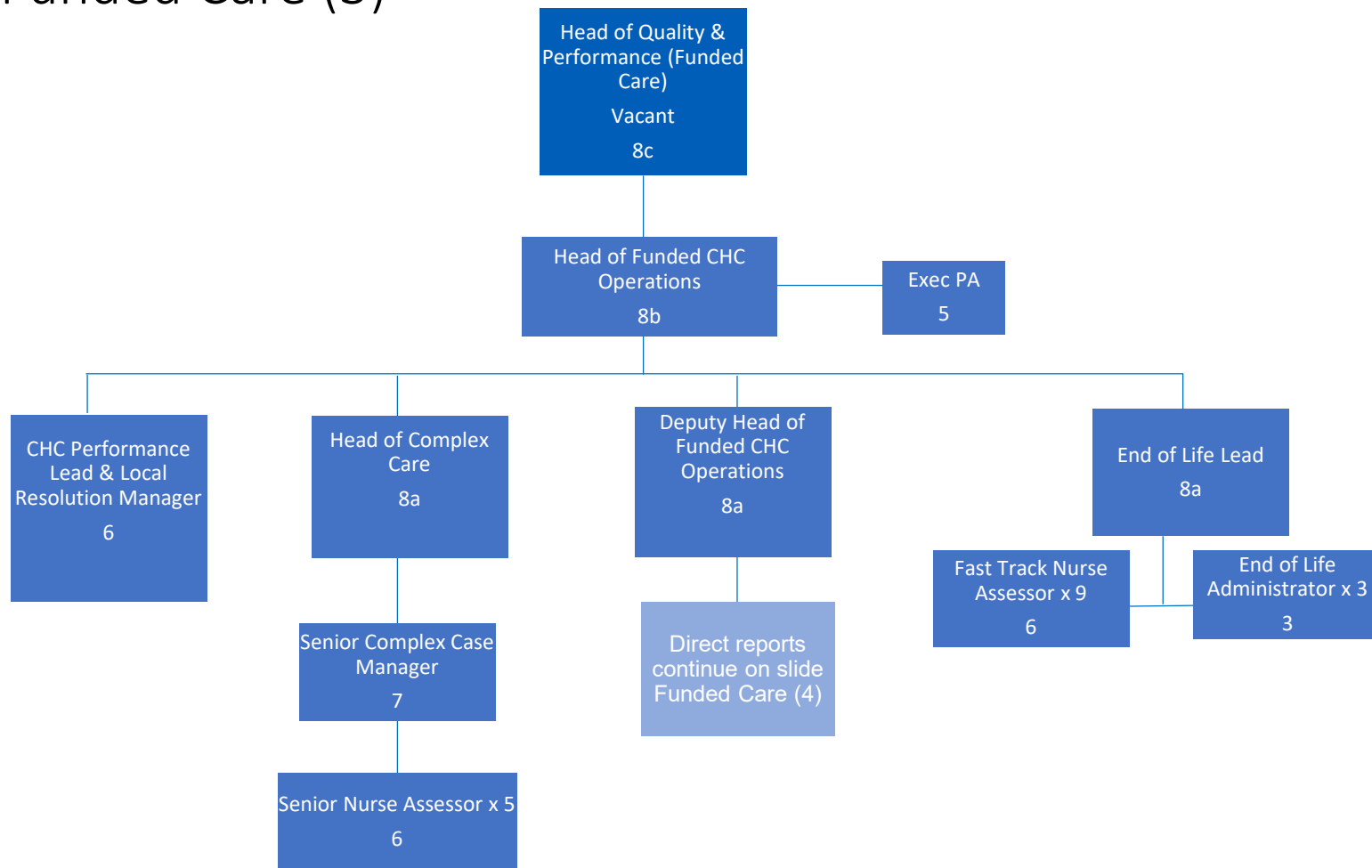
Funded Care (2)



Funded Care (3)



Funded Care (3)



Funded Care (4)

